

Rhwydwaith  
**CYMUNEDAU MWY DIOGEL CYMRU**  

---

**WALES SAFER COMMUNITIES**  
Network

# **Gwaith hyd yn hyn** Work to date

## Sarah Capstick & Helen Hill

[www.cymunedaumwydiogel.cymru](http://www.cymunedaumwydiogel.cymru)

[www.safercommunities.wales](http://www.safercommunities.wales)





## **Briff**

**Fortnightly circular to over 200 recipients across Wales**

- **Multiple sources utilised to find relevant and current information**
- **Partner driven and Community Safety focused**
- **11 Key categories covered**



Rhwydwaith  
**CYMUNEDAU MWY DIOGEL CYMRU**  
WALES SAFER COMMUNITIES  
Network

# Seminar Series and Workshops

## Summer Seminar Series:

- **Responding to challenges of Anti-Social Behaviour (ASB)**
- **Wales Data Analysis Innovation and Improvement Network (WDAIIN) Showcase Event**
- **Developing your own Public Information Campaign**

## Winter Series:

- **Citizen & Community Engagement: Strengthening local response to Serious Organised Crime (SOC) with Clear Hold Build**
- **Right Wing Extremism in Wales: What we've heard and what works**
- **Safer Streets Learning (14/03/2022)**

## Workshops:

- **Preparing for the Serious Violence Duty**
- **Beating Crime Plan: Serious Organised Crime Workshop**
- **Spiking Workshop**
- **VAWDASV Consultation Workshop**



# Podcasts: Series One

Welsh Series	English Series
<b>Episode 1: The evolving nature of community safety with Dafydd Llywelyn, Police and Crime Commissioner</b>	<b>Episode 1: The evolving nature of community safety with Chris Davies, Chief Fire Officer</b>
<b>Episode 2: Speaking up! Exploring the public's role in solving crime and the work of Crimestoppers with Mr Mansel Jones</b>	<b>Episode 2: Speaking up! Exploring the public's role in solving crime and the work of Crimestoppers with Ella Rabaiotti</b>
<b>Episode 3: Looking beyond the obvious – Safeguarding and community safety with British Transport Police</b>	<b>Episode 3: Looking beyond the obvious – Safeguarding and community safety with British Transport Police</b>
<b>Episode 4: Tackling racism and hate crime – The work of Victim Support in making Wales a kinder, more inclusive place to live</b>	<b>Episode 4: Tackling racism and hate crime – The work of Victim Support in making Wales a kinder, more inclusive place to live</b>



# Briefings and consultations

**3 specific briefings written: Safer Streets, Domestic Abuse Act 2021, Beating Crime Plan.**

**17 Consultations submitted to Welsh Government, the Senedd and Westminster (with 30 more reviewed).**

**4 Engagements pre-consultation with Welsh Government and Westminster.**



Rhwydwaith  
CYMUNEDAU MWY DIOGEL CYMRU  
WALES SAFER COMMUNITIES  
Network

## Understanding the profile of community safety in Wales:

### A workforce survey of Local Authorities

APRIL 2021



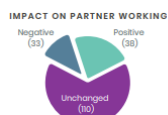
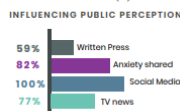
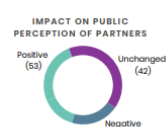
Rhwydwaith  
CYMUNEDAU MWY DIOGEL CYMRU  
WALES SAFER COMMUNITIES  
Network

# POLICING IN COMMUNITY SAFETY

UNDERSTANDING THE PROFILE IN WALES

JULY 2021

## ALL WALES ANTI SOCIAL BEHAVIOUR (ASB) PRACTITIONERS COVID-19 SURVEY 2021 FINDINGS SUMMARY



"[Covid-19 resulted in] increased workloads and no additional resource so [we] had to innovate around the use of partner resource." Participant

- TOP 5 REASONS FOR INCREASED ASB REPORTING\*
1. Covid-19 breaches
  2. Neighbour related nuisance
  3. Noise disturbances
  4. Youths hanging around
  5. Drug use & drug paraphernalia

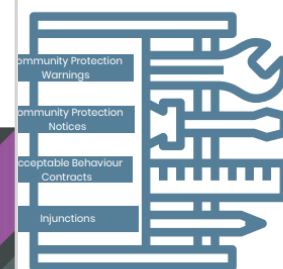
\*TOP 4 OVER HALF OF RESPONDENTS

"People being at home more led to a direct increase in reporting of Anti Social Behaviour." Participant

Participants stated that evictions being on hold has led to

- Increased ASB
- Fear in communities
- Additional provocative neighbour
- Reduced police and tools enforce

### MAIN TOOLS WITH INCREASED USE TO ADDRESS ASB DURING COVID-19



"B&Bs not wanting to associate with us it was a local hotel that accepted the mess, where we saw 40 housed in one area. I drink, drugs and mental health, this is very noticeable in one town" Participant

Practitioner views on changes as a result of COVID and changes anticipated as restrictions ease

- Need to regain confidence in community
- Shops closing
- Tolerance levels change
- More neighbour disputes
- Increased use of technology & communications methods to engage with communities
- People out & about, meeting up
- More parties at home
- Face-to-face service engagement
- Changes in Night-time economy
- Return to street homelessness
- Refocus of the priority
- Large groups of youths congregating



Rhwydwaith  
CYMUNEDAU MWY DIOGEL CYMRU  
WALES SAFER COMMUNITIES  
Network

# COMMUNITY SAFETY IN WALES

## Wales Safer Communities Network Baseline Survey

October 2021





Rhwydwaith  
**CYMUNEDAU MWY DIOGEL CYMRU**  
 WALES SAFER COMMUNITIES  
 Network

# Working in Partnership



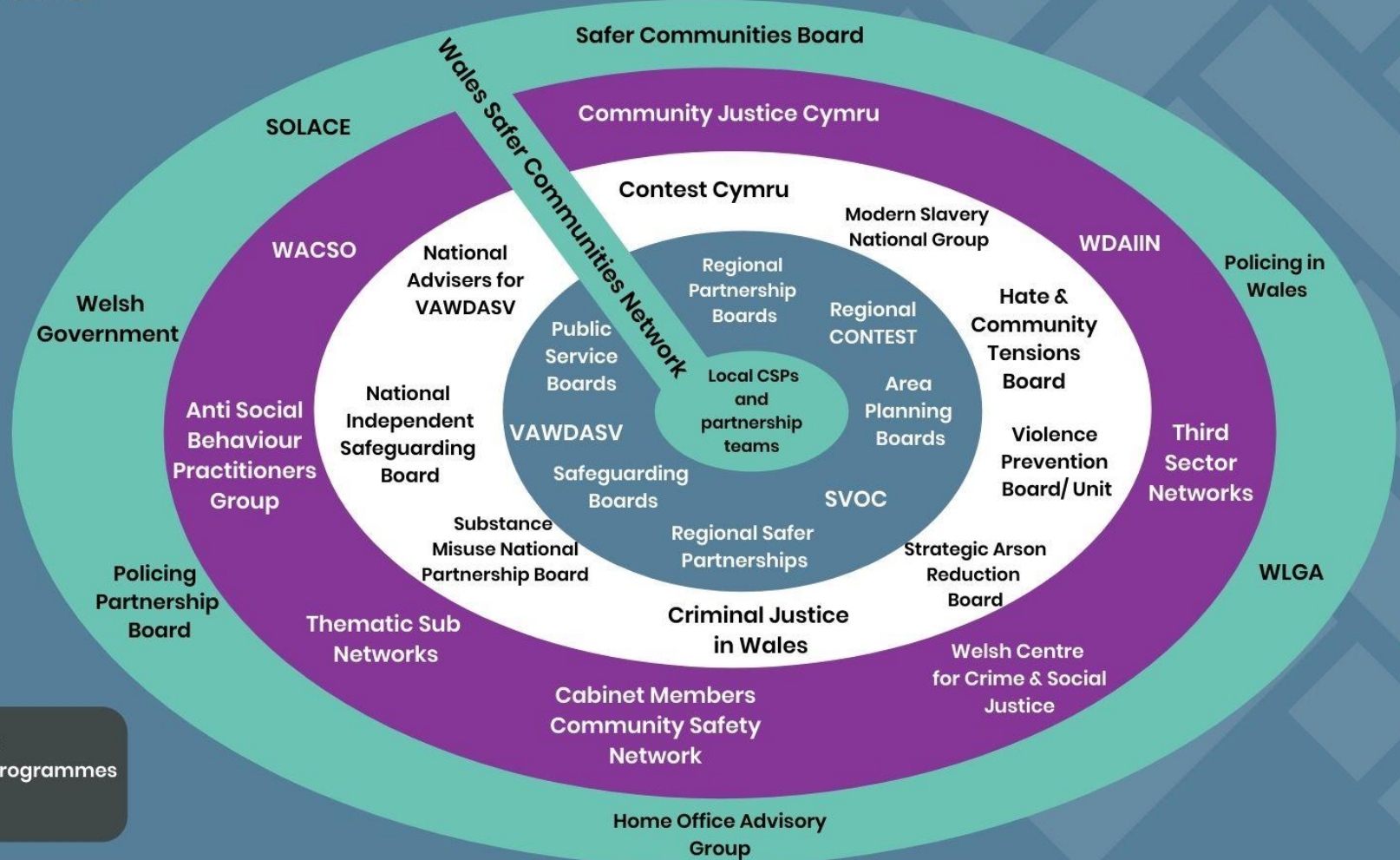
Rhwydwaith  
**CYMUNEDAU MWY DIOGEL CYMRU**  
 WALES SAFER COMMUNITIES  
 Network

## WALES SAFER COMMUNITIES NETWORK PARTNERSHIP LANDSCAPE

### Safer Communities Board:

Local government and policing in Wales, involving other key partners, aiming to ensure effective shared leadership is provided to support local partnership working that will support safe, strong and more confident communities.

NOTE: This list is not exhaustive. The Network acknowledge there may be other relevant programmes of work and national and regional groups.





## **Working with partner networks**

- Wales Association of Community Safety Officers (WACSO)
- Wales Data Analysis Innovation & Improvement Network (WDAIIN)
- ASB Practitioners Network

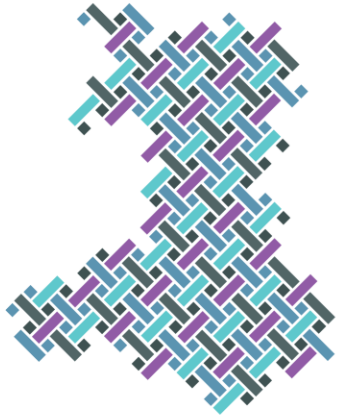




Rhwydwaith  
**CYMUNEDAU MWY DIOGEL CYMRU**  
WALES SAFER COMMUNITIES  
Network

## Social Media

- **Twitter:** [@CymMwyDiogel](https://twitter.com/CymMwyDiogel) / [@WalesSaferComms](https://twitter.com/WalesSaferComms)
- **Website:** [Cymunedau Mwy Diogel i Gymru - Wales Safer Communities](http://CymunedauMwyDiogelIYmru-WalesSaferCommunities) / [Safer Communities for Wales - Wales Safer Communities](http://SaferCommunitiesforWales-WalesSaferCommunities)



Rhwydwaith  
**CYMUNEDAU MWY DIOGEL CYMRU**  

---

**WALES SAFER COMMUNITIES**  
Network

**Diolch yn fawr / Thank you**  
**Cysylltwch â ni / Please get in touch**

[cymunedaumwydiogel@wlga.gov.uk](mailto:cymunedaumwydiogel@wlga.gov.uk)  
[safercommunities@wlga.gov.uk](mailto:safercommunities@wlga.gov.uk)

[www.cymunedaumwydiogel.cymru](http://www.cymunedaumwydiogel.cymru)  

---

[www.safercommunities.wales](http://www.safercommunities.wales)

