



Anti-Social Behavior Awareness Week 2022



Heddlu Police

**DYFED-POWYS**



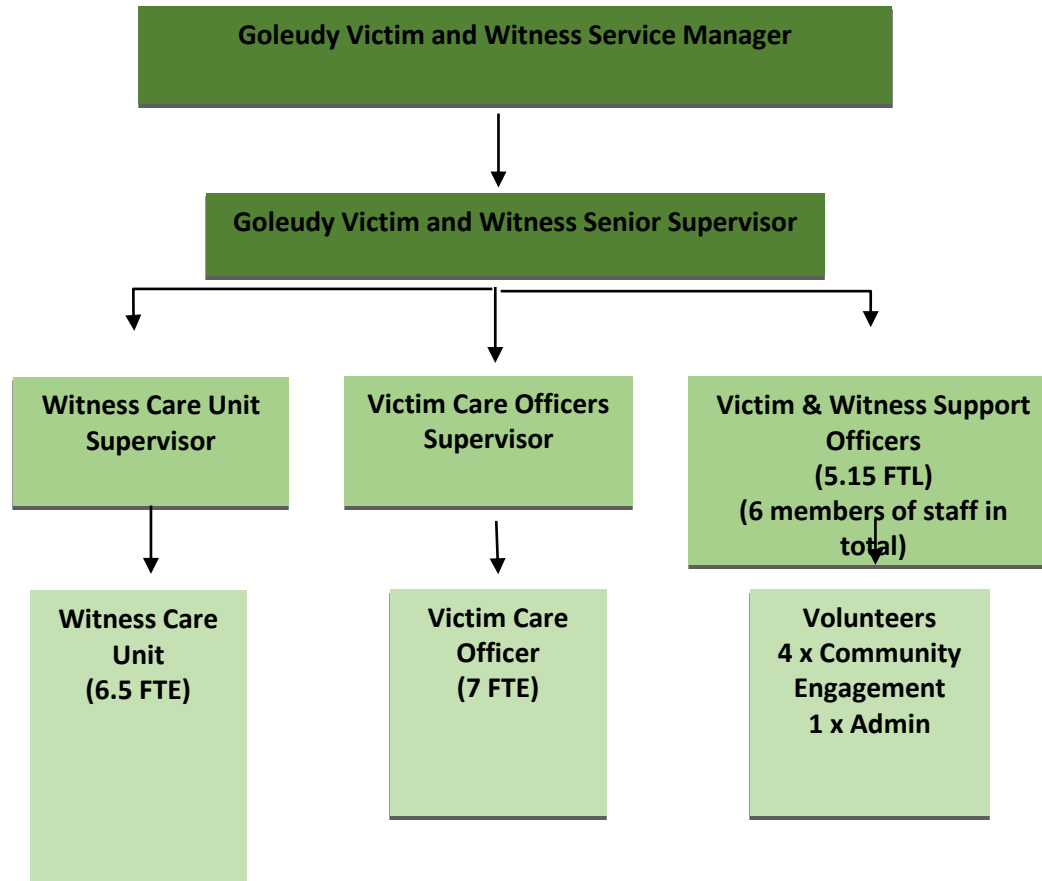


## Goleudy's overarching aim:

“To help victims cope with the impact of a crime and provide emotional support for the harm they have experienced”



# Department Structure



# Referral Pathways

Victims and witnesses can be referred via:

- Heddlu Dyfed-Powys Police
- External statutory and voluntary agencies
- Self-referral pathway - For those victims, who for whatever reason, have chosen not to report the crime and regardless of when it happened

# Priorities

Priority 1 – Victims Supported

Priority 2 – Harm is prevented more effectively

Priority 3 - Our Justice System is more effective

# Working Together



Heddlu Police  
**DYFED-POWYS**

# Goleudy ASB Case Study

## Situation:

- IP (73yrs) lived alone as his wife had dementia and was in a care home.
- Neighbor was abusive and made threats of violence.

## Goleudy Support:

- Goleudy provided regular calls, safety planning advice and liaised with NPT.
- Goleudy worked with IP to build strategies to manage anxiety and improve wellbeing.

## Outcome:

- Police were able to take positive action as the IP provided clear evidence of the ASB.
- The ASB ceased and the IP was able to take back control of his life.



## Victim feedback:

*“I would like to record my appreciation of the Support Officer – they have made, and continues to make, a difference. They alone gives me a sense that I am not on my own in trying to cope with the strange situation in which I find myself.”*

*‘I could not let you go without recording my deep and sincere gratitude for your support, patience and practical advice over the past many months’.*

*‘You and your service made a difference’.*





# Way Forward

- To continue to build strong links with police officers, staff and our partner agencies within our communities.
- Co-located Support Officers will continue to work in collaboration with Local ASB Co-ordinators.
- Presence at community engagement events.



Thank you/ Diolch

