

A photograph of a wildfire. Thick, billowing white and grey smoke rises from the ground, partially obscuring a line of evergreen trees in the foreground. In the background, a hillside is visible under a bright sun that creates a lens flare effect. The sky is a mix of blue and white, with some smoke drifting upwards.

WILDFIRES

A Strategic Partnership Approach
Wales

PETER GREENSLADE
RICHIE VAUGHAN-WILLIAMS
MID & WEST WALES FIRE & RESCUE SERVICE



Impacts

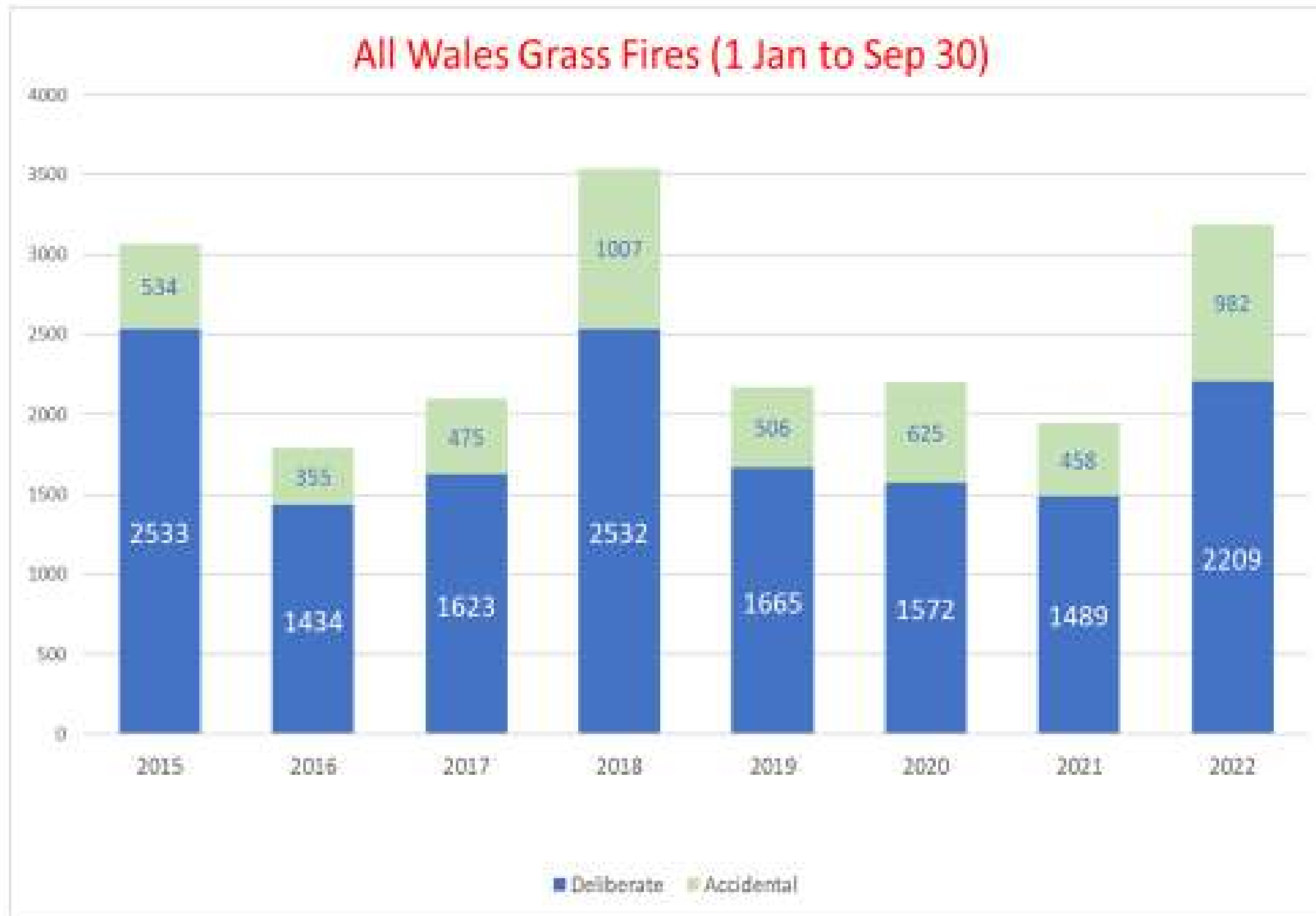
The Scale of the Problem

Under Climate change predictions, Wales is anticipated to have decreased summer precipitation and increased summer temperatures, increasing the risk of Wildfires each year.

Annual Grass Fires since 2015 (Jan to Sep 30)

Overall the number of Grass fires have increased by 1,244 an increase of 64% to 3191

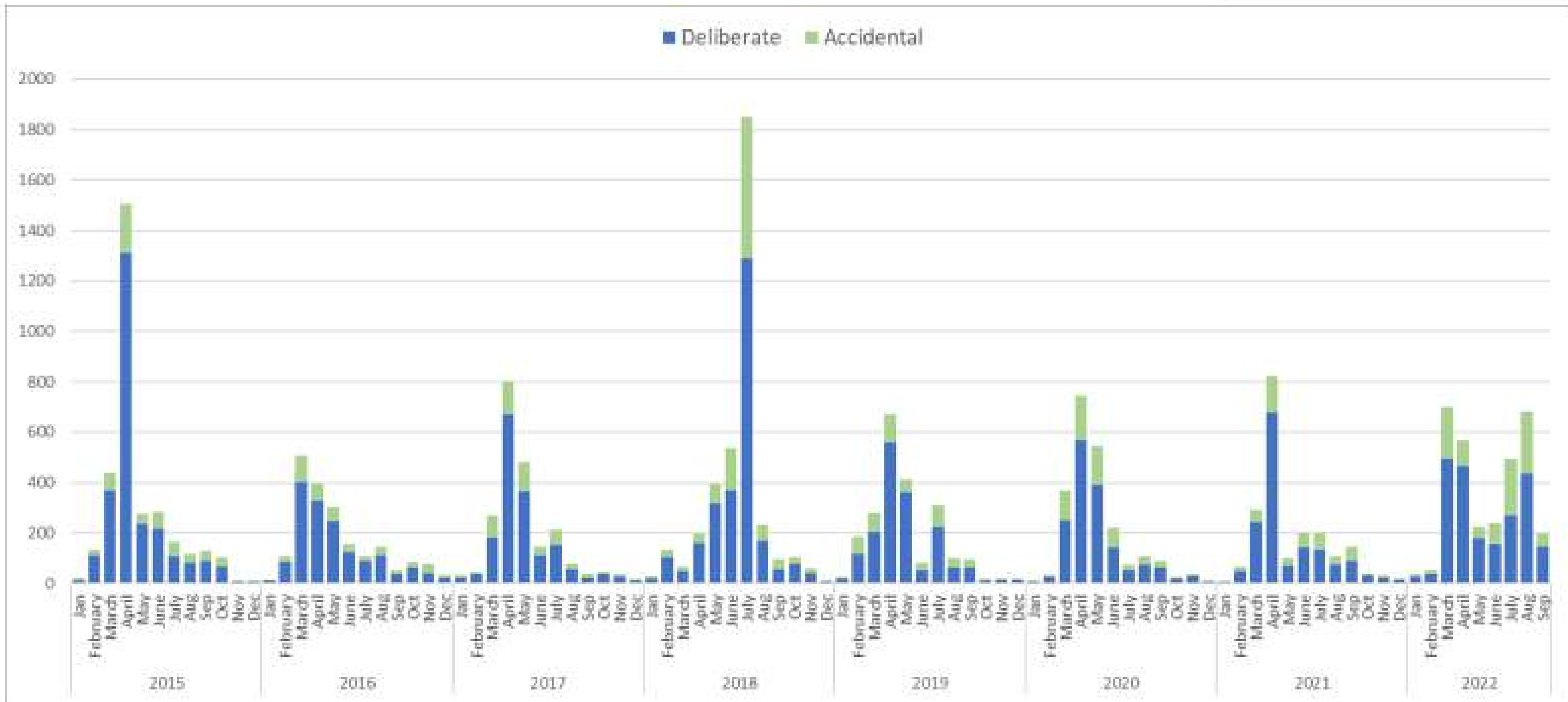
Deliberate grass fire up from 1489 to 2209 (48% increase) from 2021 compared with 2022



All Grass Fires since 2015



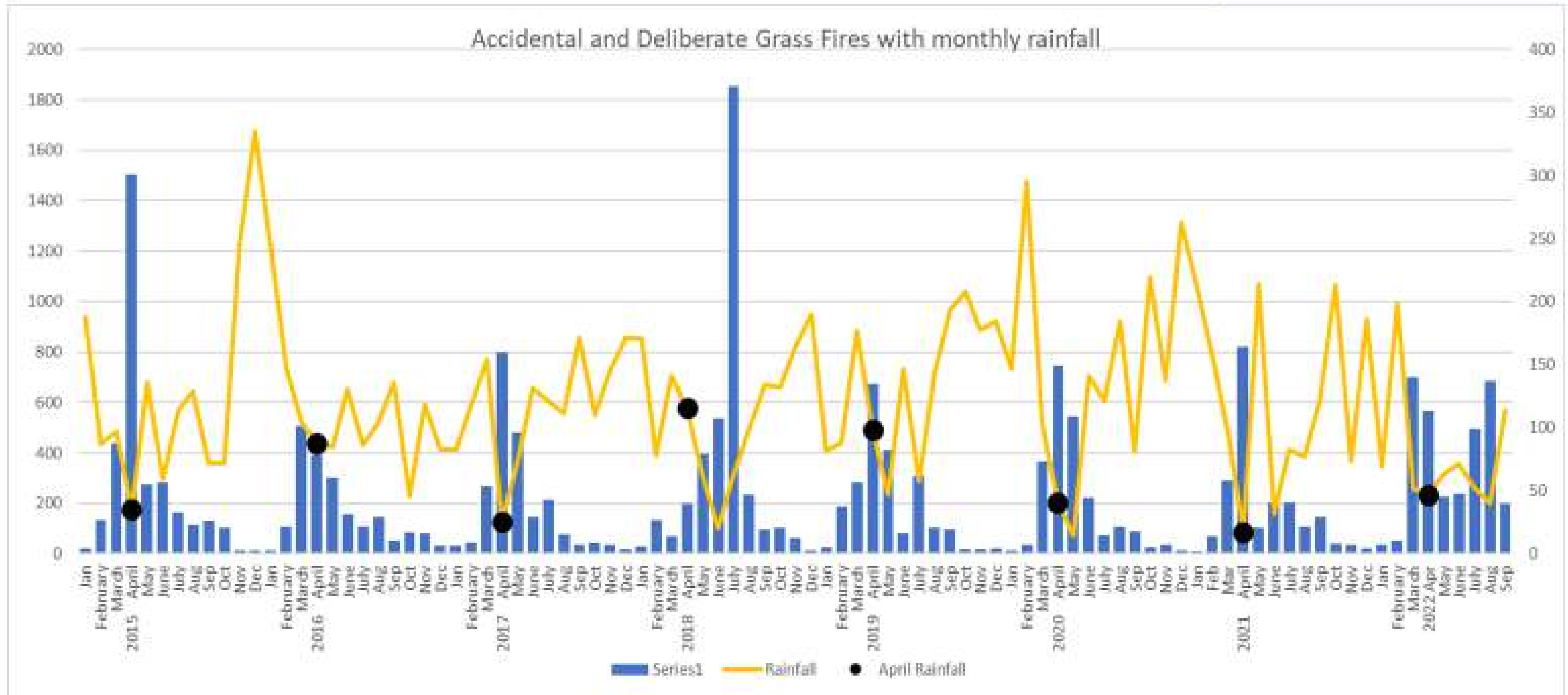
Gwasanaeth Tân ac Aelod
Ceredigion a Gogledd Cymru
Mid and West Wales
Fire and Rescue Service



Grass Fires with Weather Trends



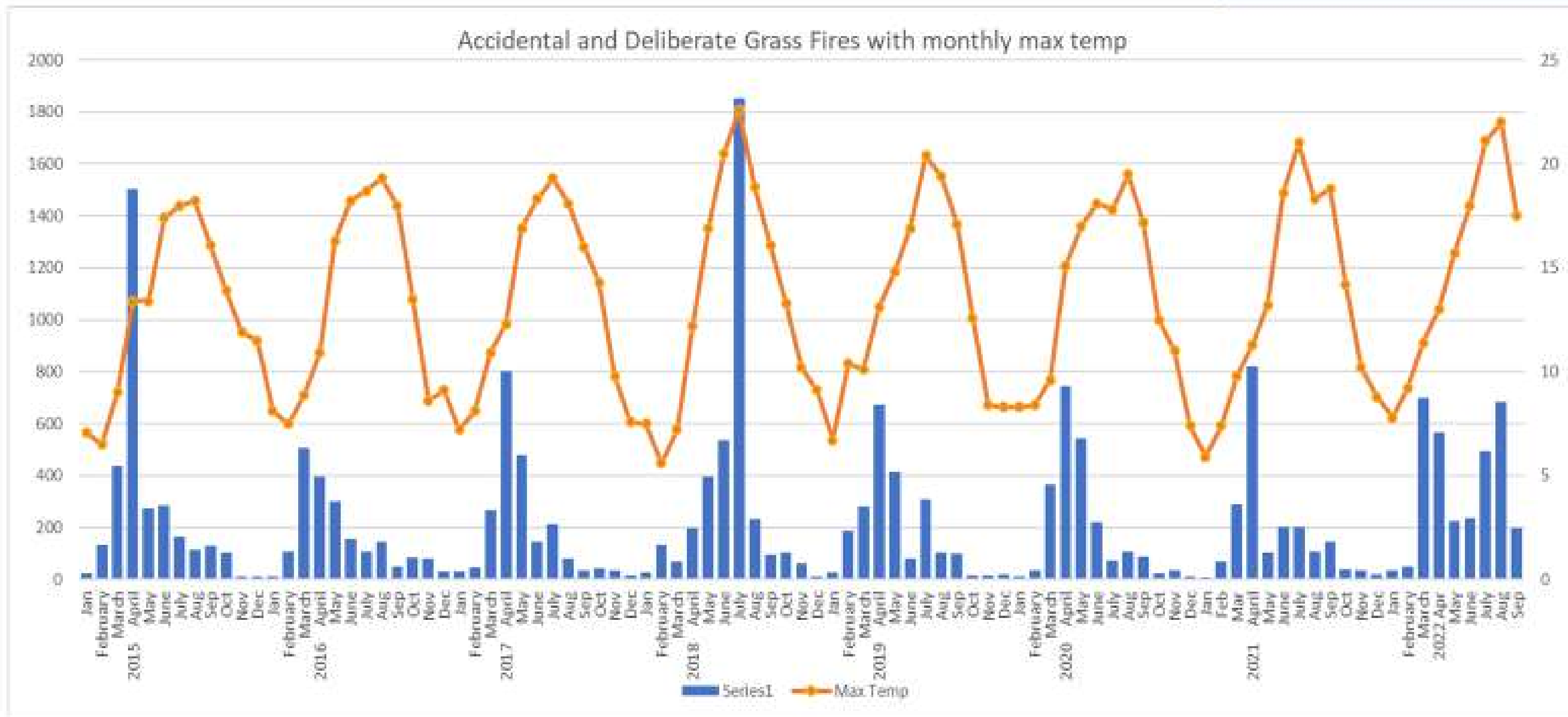
Gwasanarth Tân ac Aelod
Canelbarth a Gogledd Cymru
Mid and West Wales
Fire and Rescue Service



Grass Fires with Weather Trends



Gwasanaeth Tân ac Aelod
Candolharth a Goflewin Cymru
Mid and West Wales
Fire and Rescue Service



Partnership

Through an evolving partnership approach, we will:

Bring together Welsh Government, Emergency Services, Public and Private Organisations, Landowners and Land Users to manage and develop our landscape

Through leadership, collaboration and communication we will:

Understand and recognise each others impacts to develop a range of early interventions

Deliver a one voice approach to wildfire messaging, awareness and education across Wales

Have a better understanding of wildfire risk management across Wales

Change perceptions and create a wildfire wise Wales

Environmental & Community Resilience



We will contribute to management of our landscape to:

Protect wildlife, forestry, and livelihoods, improve wellbeing, health, and amenity, facilitate sustainable food production and create sense of place and community ownership

We will enhance the landscape in Wales by:

Managing the number, scale and severity (and impact) of wildfire incidents

Adapting to nature and climate developments and restoring connections to green space and community

Supporting cleaner air and protecting natural and heritage resources

Protecting our carbon sources in soil and woodlands

Prevention & Protection



We will implement a diverse range of management techniques to:

reduce the impact of wildfire on our communities and the landscape in Wales

We will do this collaboratively to:

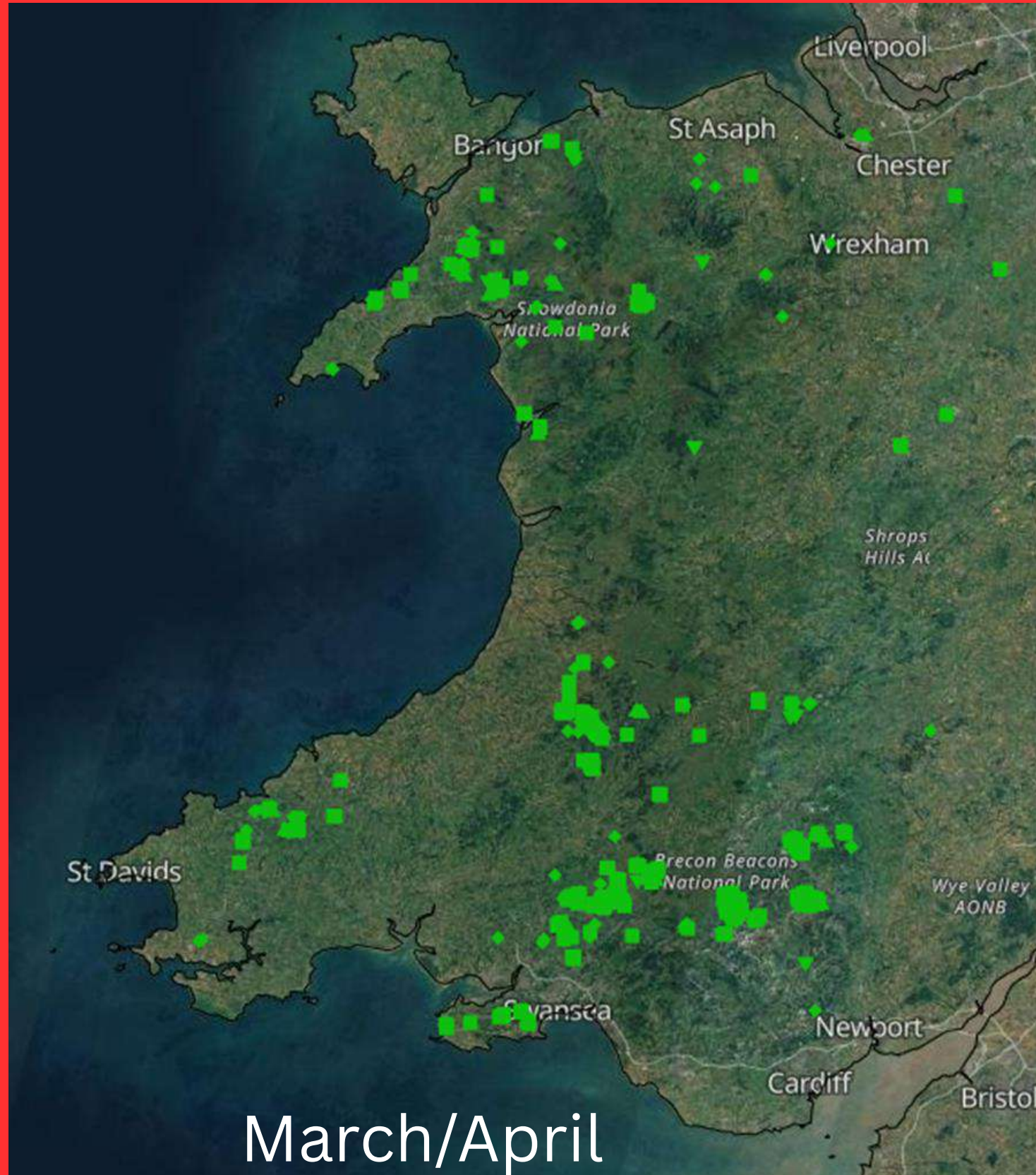
Adopt and support a Landscape Management approach to Wildfire Risk Management

Share knowledge and provide training through a Wales-wide collaboration network

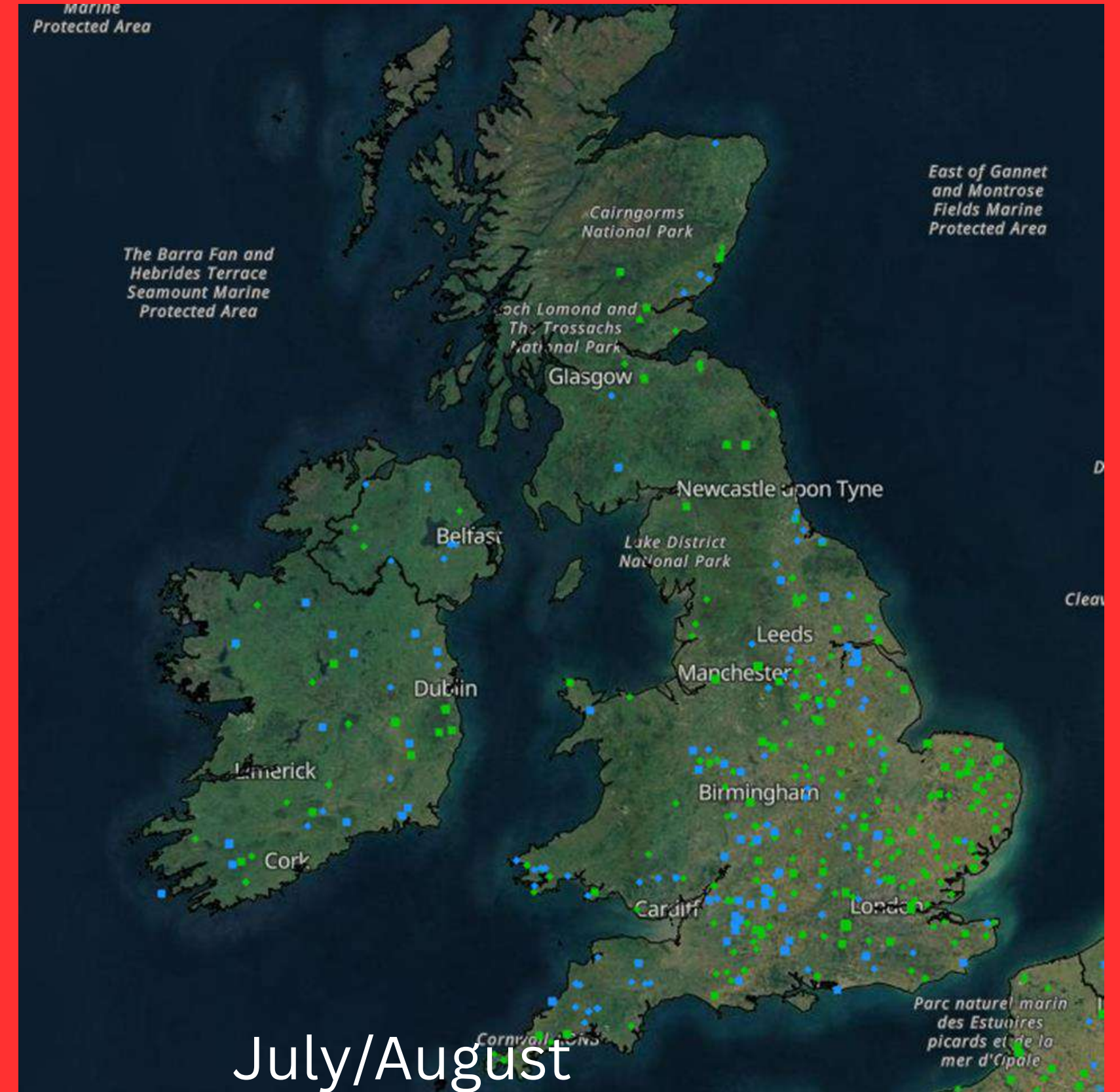
Create a multi-functional Fire Risk Map and a toolkit for preventative land management techniques

Reduce uncontrolled wildfire numbers and severity by sharing resources and implementing prevention measures

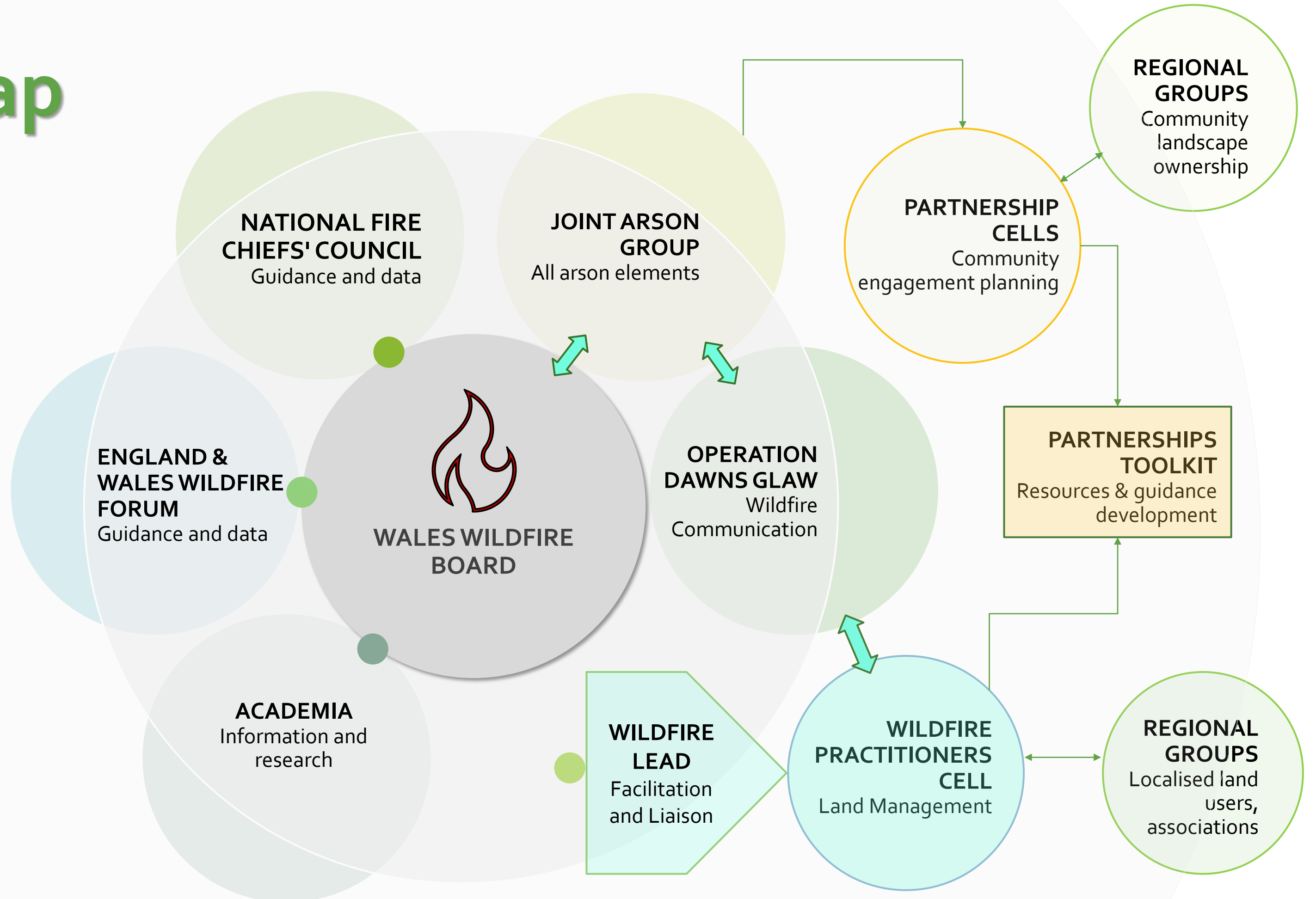
Copurnicus - Effis Active Fires Map



Copurnicus - Effis Active Fires Map



Group Map



DRAFT

Wildfire Practitioner Cells



- Icutter access point
- Paths
- ◆ INNS
- Managed area
- Firebreaks
- Boundary



0 0.1 0.2 0.3 0.4 0.5 km



Invasive species ↓
Himalayan Balsam (HB).
Mar-Sep: Pull & stamp on bottom node (wide bulbous energy joint).
Too widespread to map.



THANKYOU

